

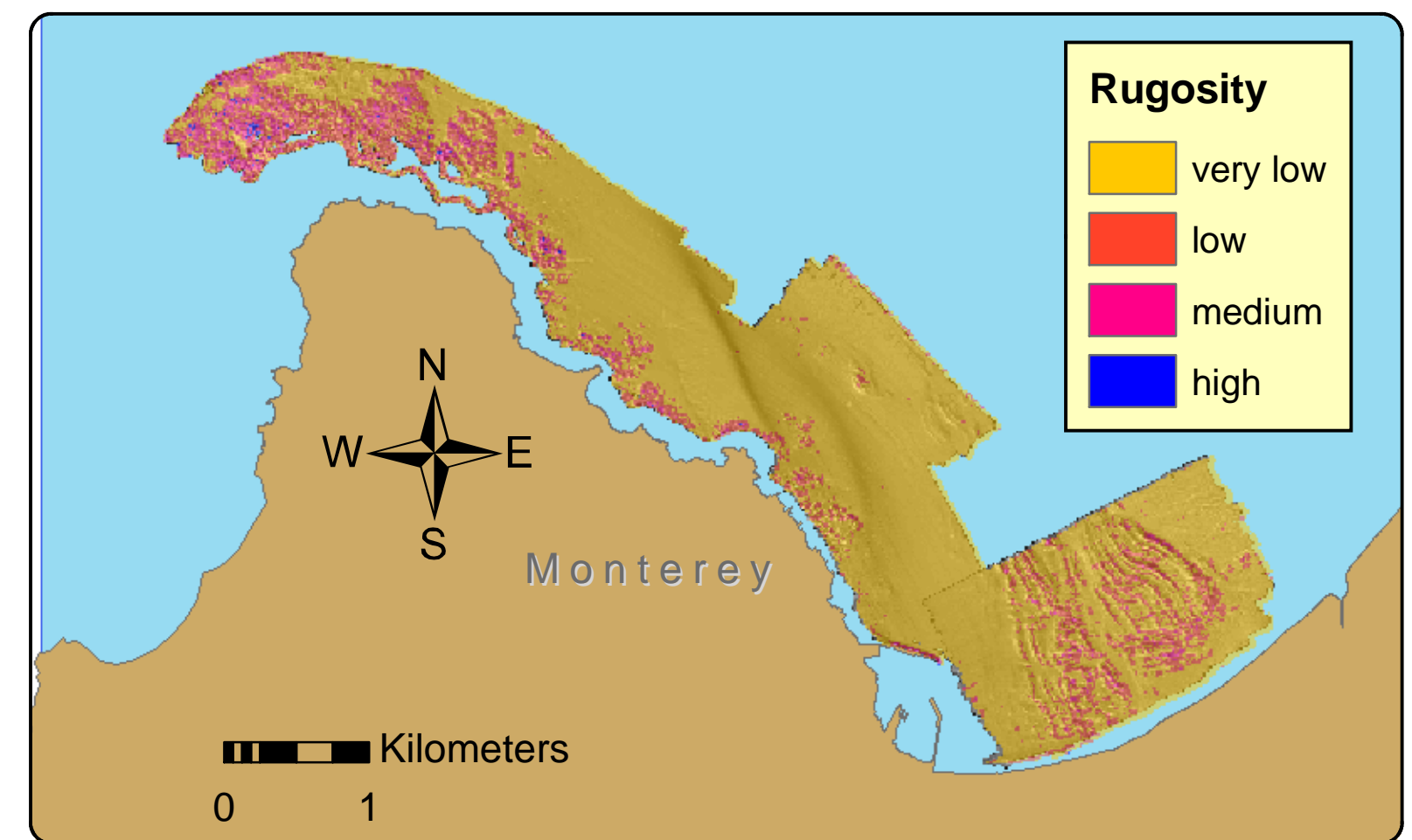
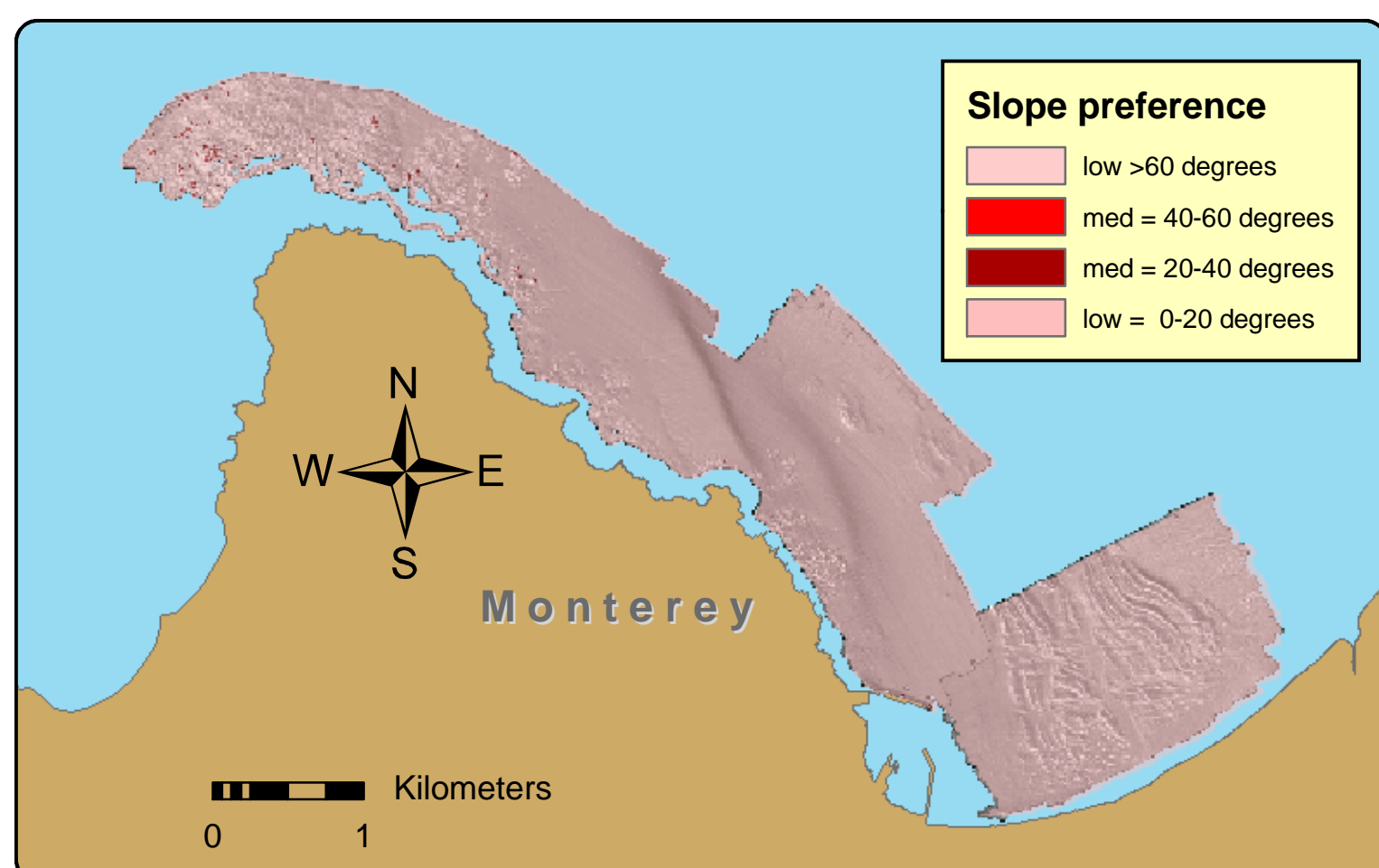
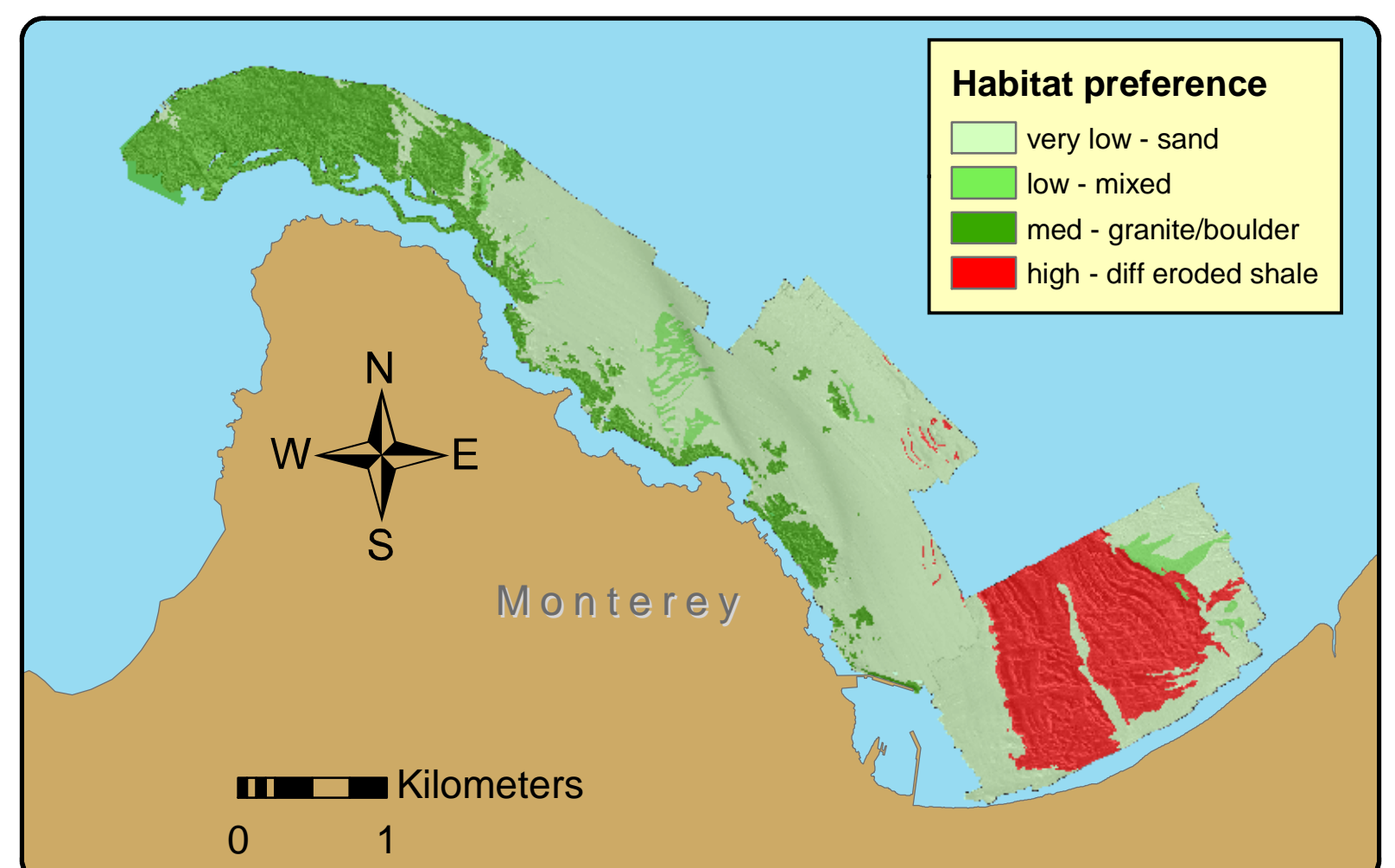
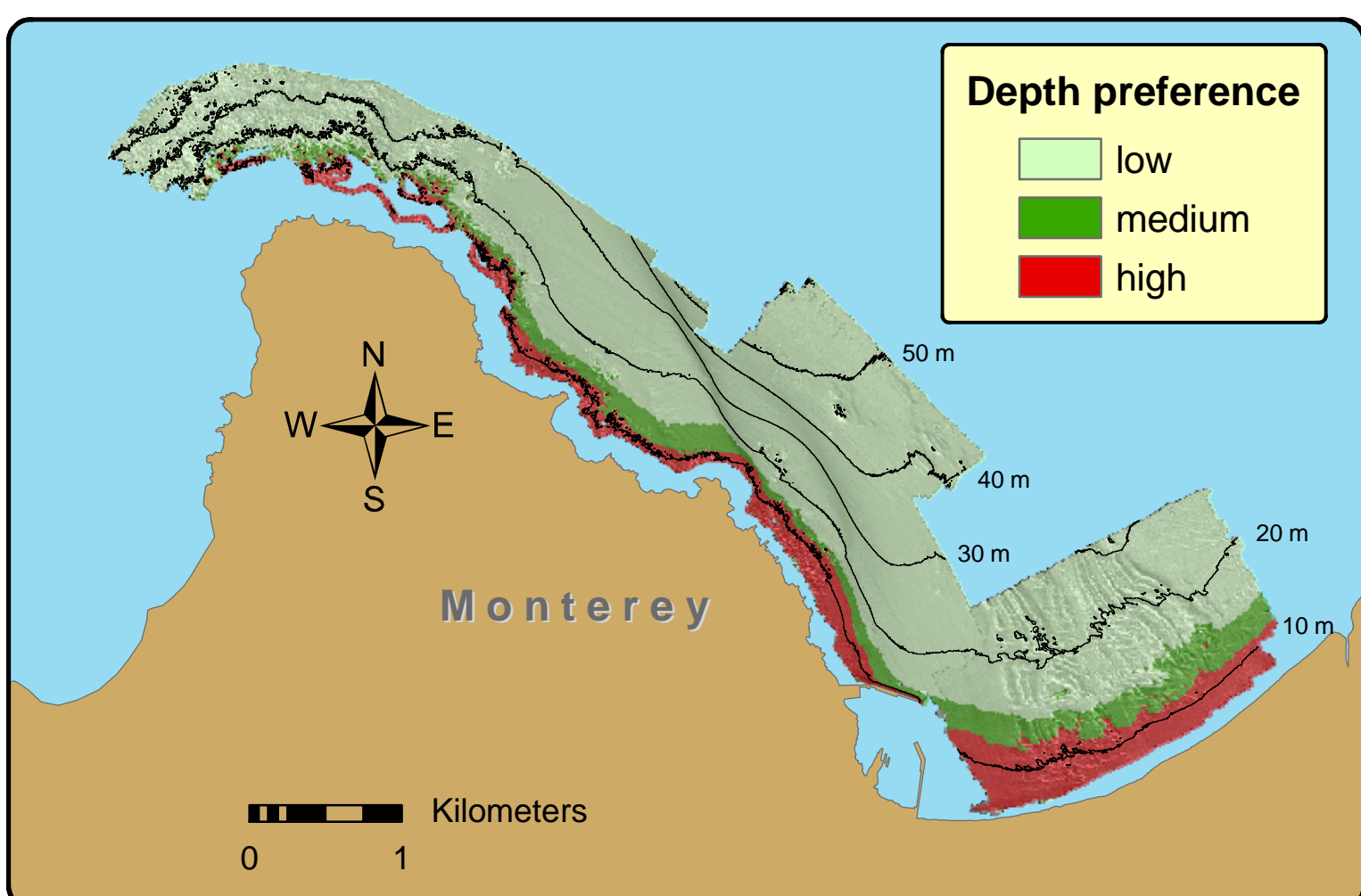
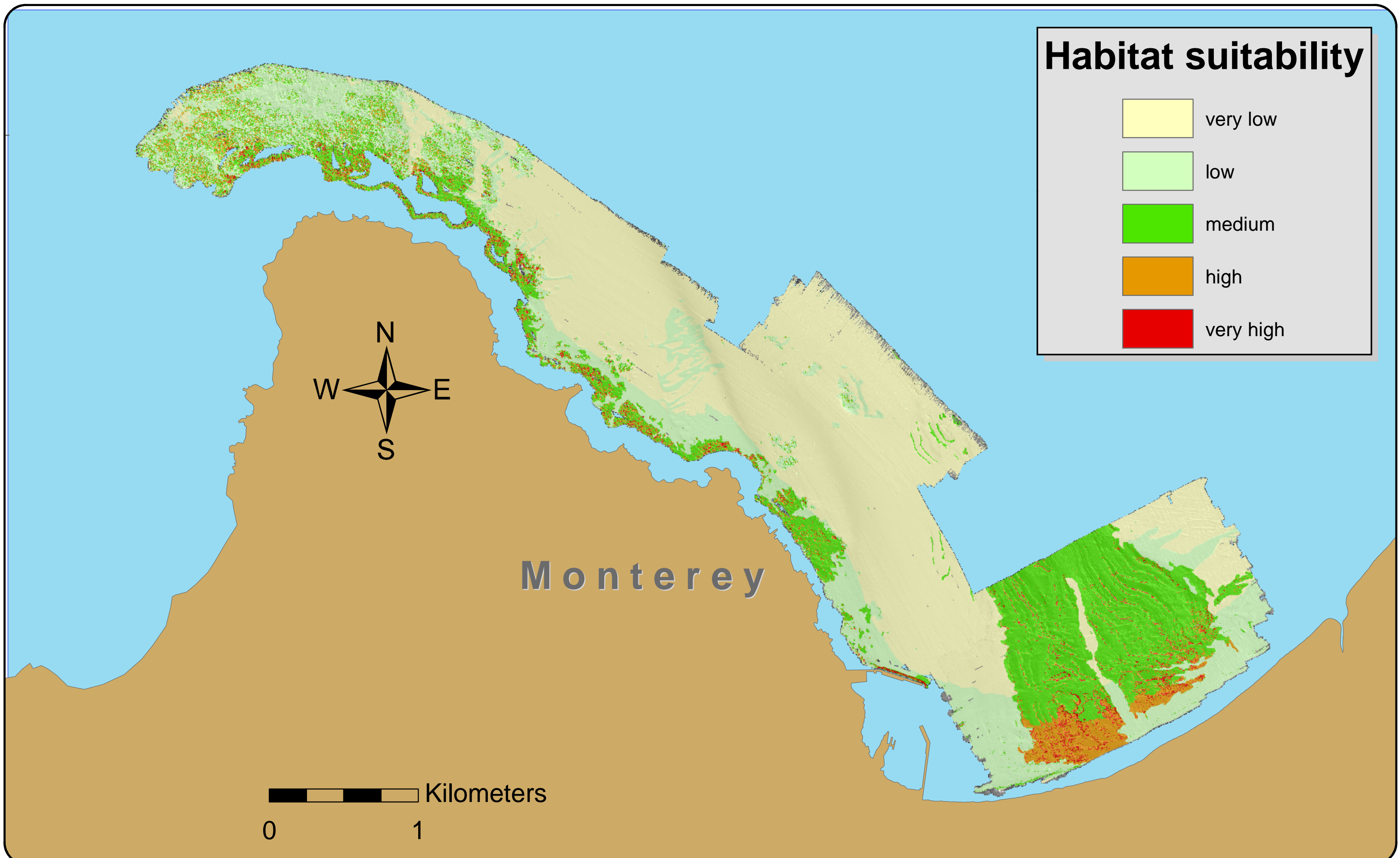
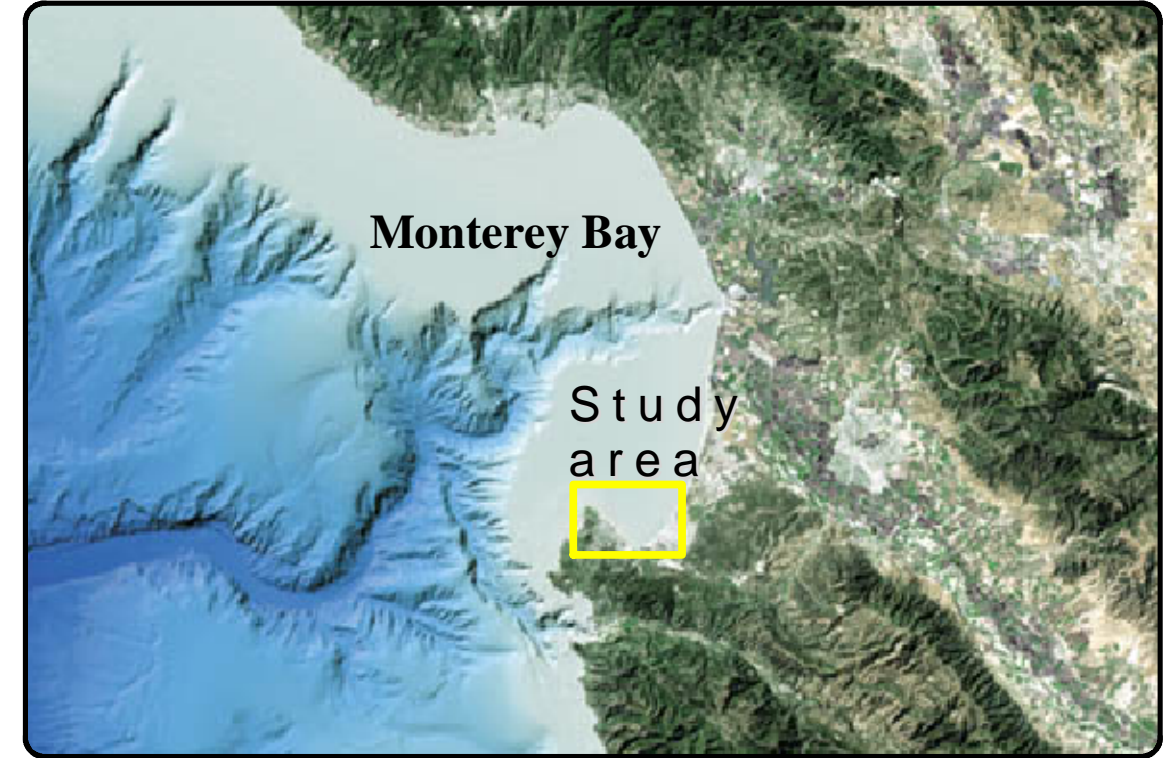
HABITAT SUITABILITY MODEL FOR KELP GREENLING IN MONTEREY BAY

Joel Elliott Department of Biology, University of Puget Sound



<http://www.seaotter.com/~jong/marine-life.html>

The objective of this project was to use GIS to model the habitat suitability for the kelp greenling, *Hexagrammos decagrammus*. A variety of data sources were used to generate the suitability index. Water depth, substrate type, substrate slope and rugosity were derived from multibeam sonar bathymetry data and side scan sonar data. The habitat suitability map below is the result of an additive model incorporating data from each of the four data sources shown in the small maps below.



Acknowledgments: This project was created as part of the MATE Center summer workshop on GIS. Thanks to Deidre Sullivan, Saundra Butcher, Dawn Wright, and all of the participants for their expertise. The bathymetric data was provided by the Seafloor Mapping Lab of California State University.

